

# Approaches for research and policy engagement on the transformations and governance of value chains and landscapes



Flagship 3

**Pablo Pacheco**

**Bonn, 19 December 2017**



LED BY



IN PARTNERSHIP WITH

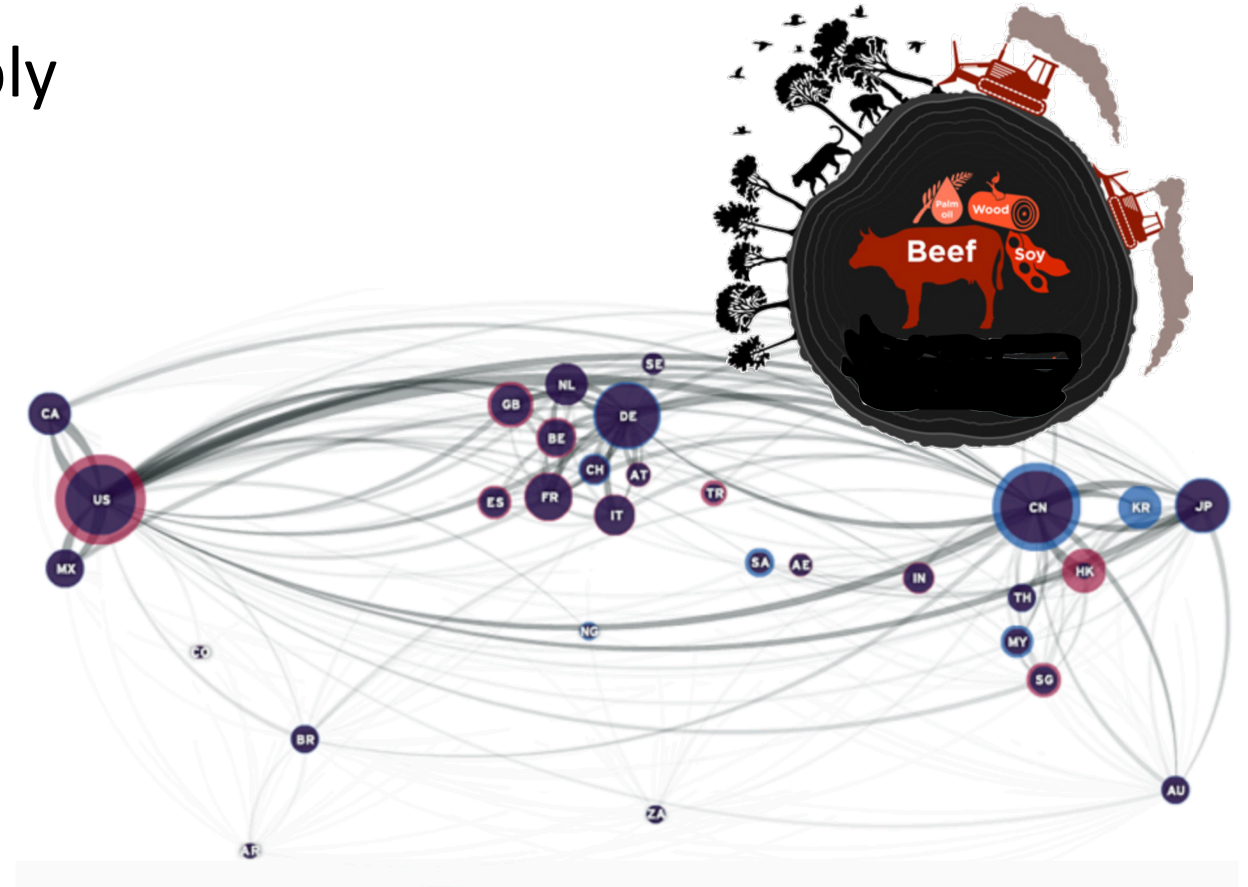


RESEARCH PROGRAM ON  
Forests, Trees and  
Agroforestry

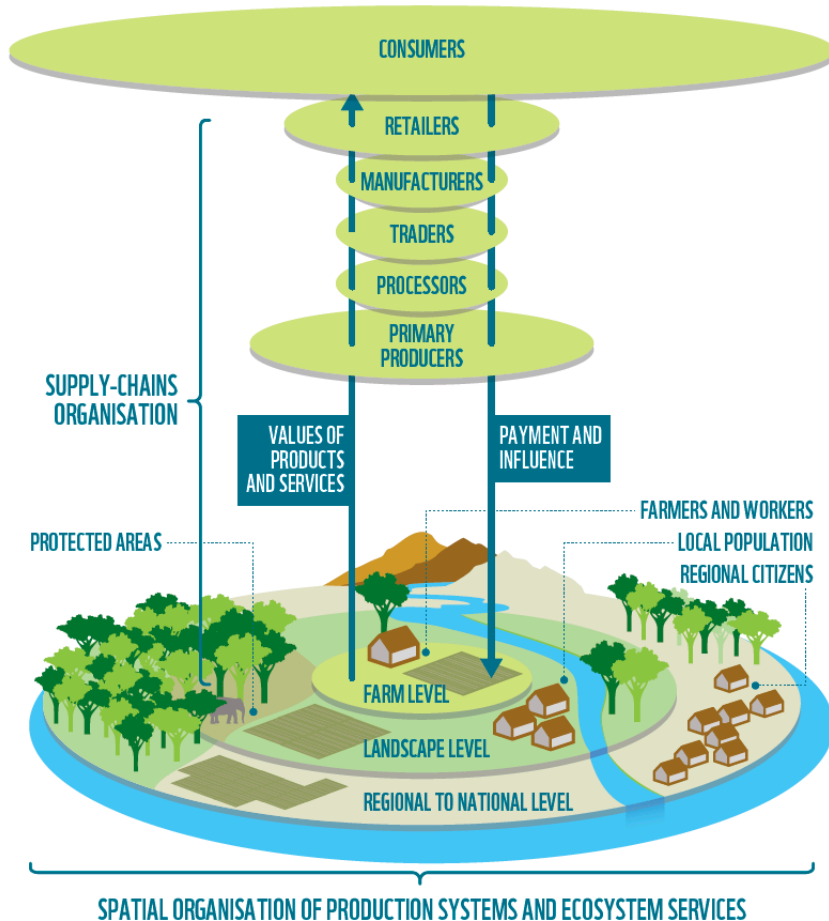
[cifor.org/Forests-Trees-Agroforestry](http://cifor.org/Forests-Trees-Agroforestry)

# Relevant international debates

- Sustainable commodity supply
- Zero deforestation
- Forest restoration
- Smallholder integration
- Responsible finance
- Financing landscapes
- Jurisdictional approaches



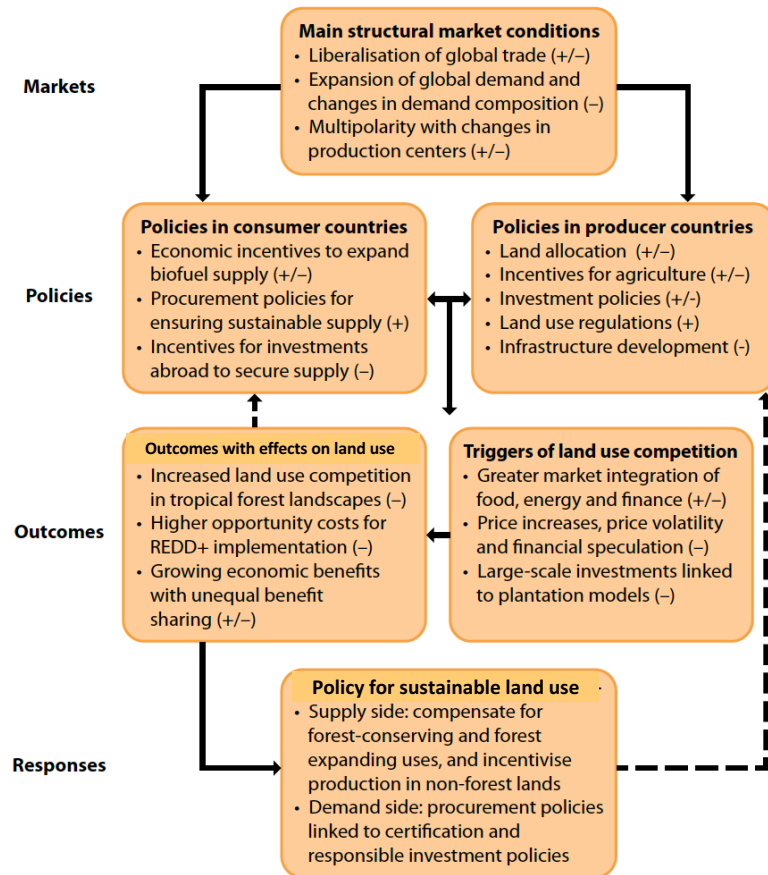
# Approaches on value chains and landscapes



- Global value chains and investments lead to landscape transformation
- Land use trajectories linked to incentives and opportunity costs
- Trends of agribusiness expansion versus smallholder agriculture
- Value chain and market configuration and capture of land economic rents
- Disparate environmental externalities and [local/national] spillover effects

Source: WWF 2016, based on Van Oorschot 2014

# Global forces driving landscape transformation



- Changes in geographies of production
  - Global trade [competitiveness]
  - Investment opportunities
  - Expected financial benefits
  - Supply and demand policies
- Teleconnections of food and land use
- Indirect land use [leakage effects]

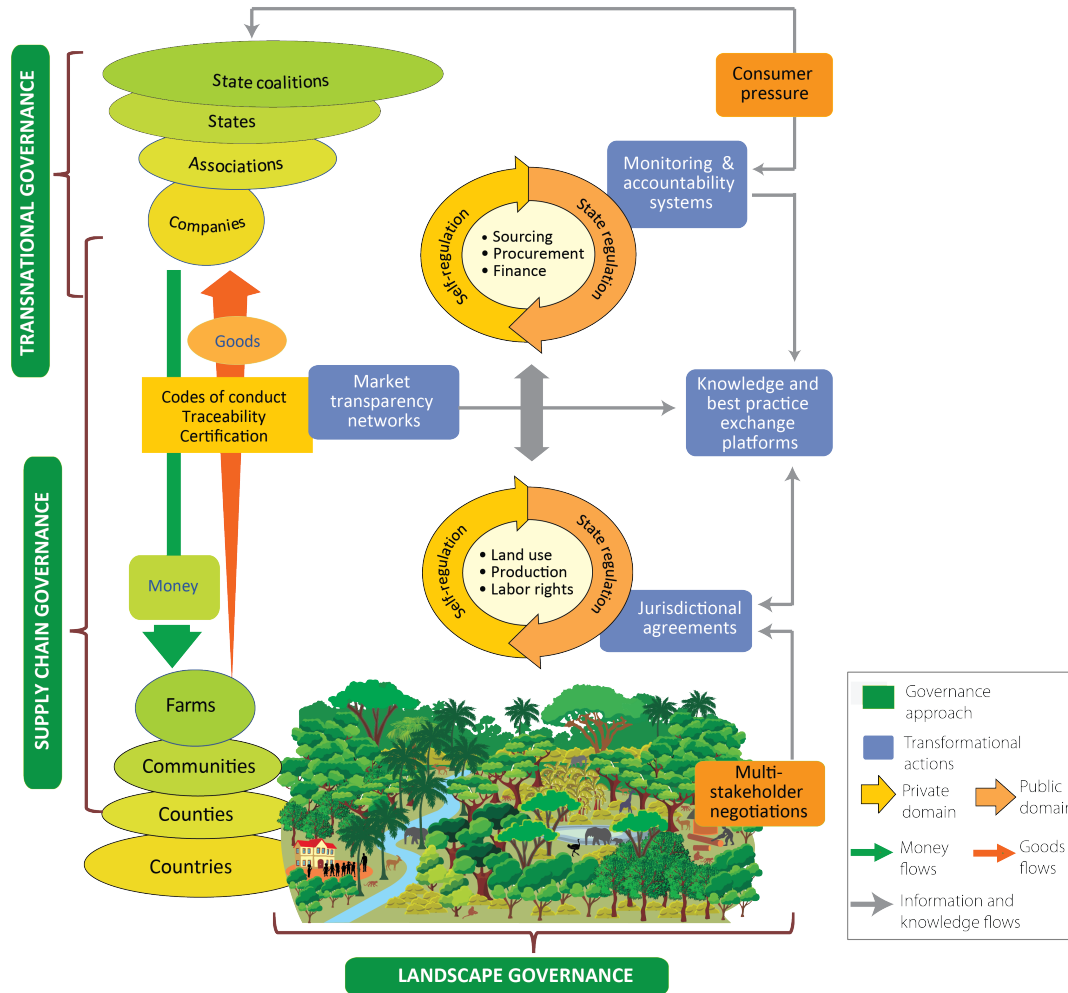
Notes:

- Core causality interactions
- - - Indirect interactions

Source: Adapted from Pacheco et al. 2012



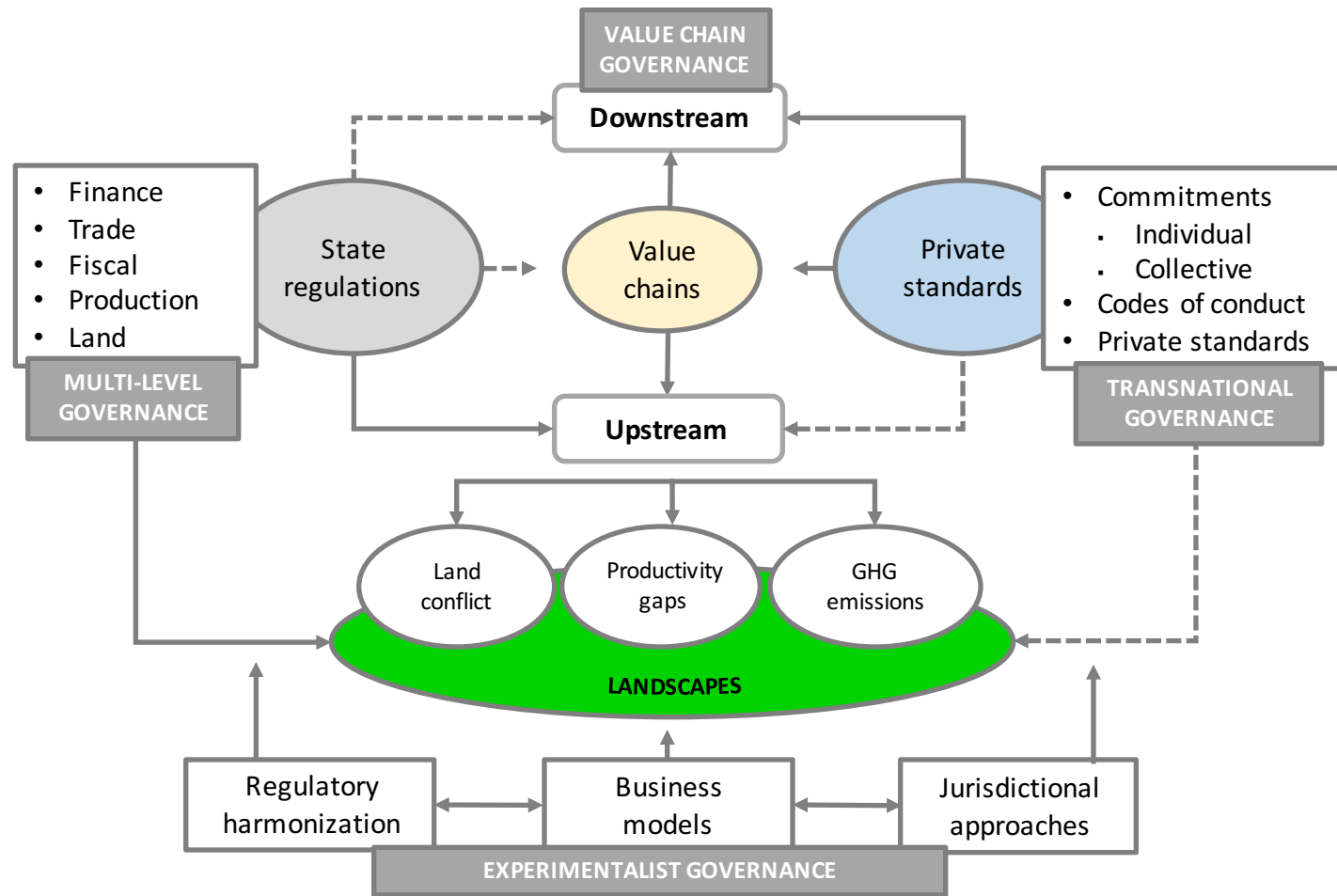
# Global/local & state/non-state interactions



- Multiple governance arrangements
  - Several sources of power & authority
  - Diverse landscape configurations
- ↓
- Efficiency, effectiveness and equity
- ↑
- Differentiated impacts on land use
  - Associated distribution of costs, benefits, risks and opportunities

Source: Pacheco et al. 2017b

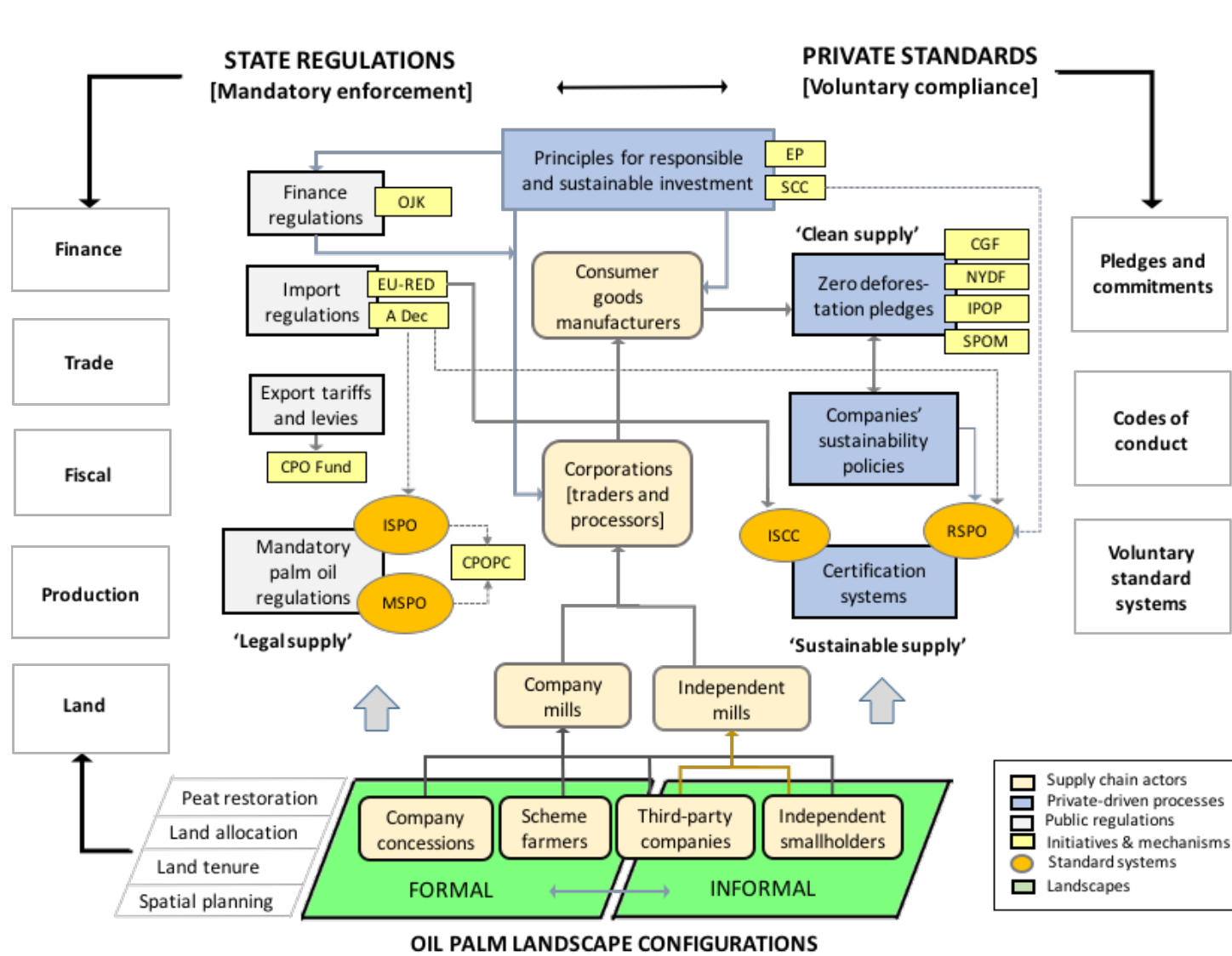
# Approaches to address performance gaps



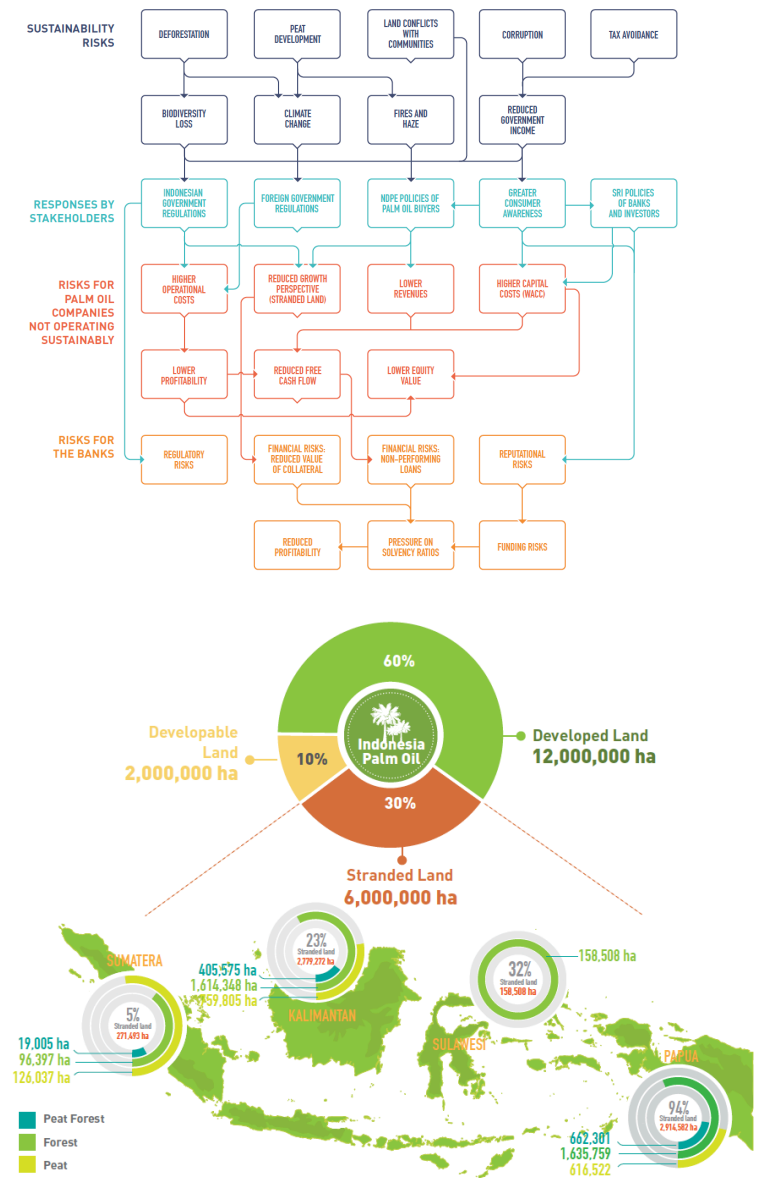
Source: Pacheco et al. 2017a

# The case of palm oil

Source: van Gelder et al. 2017

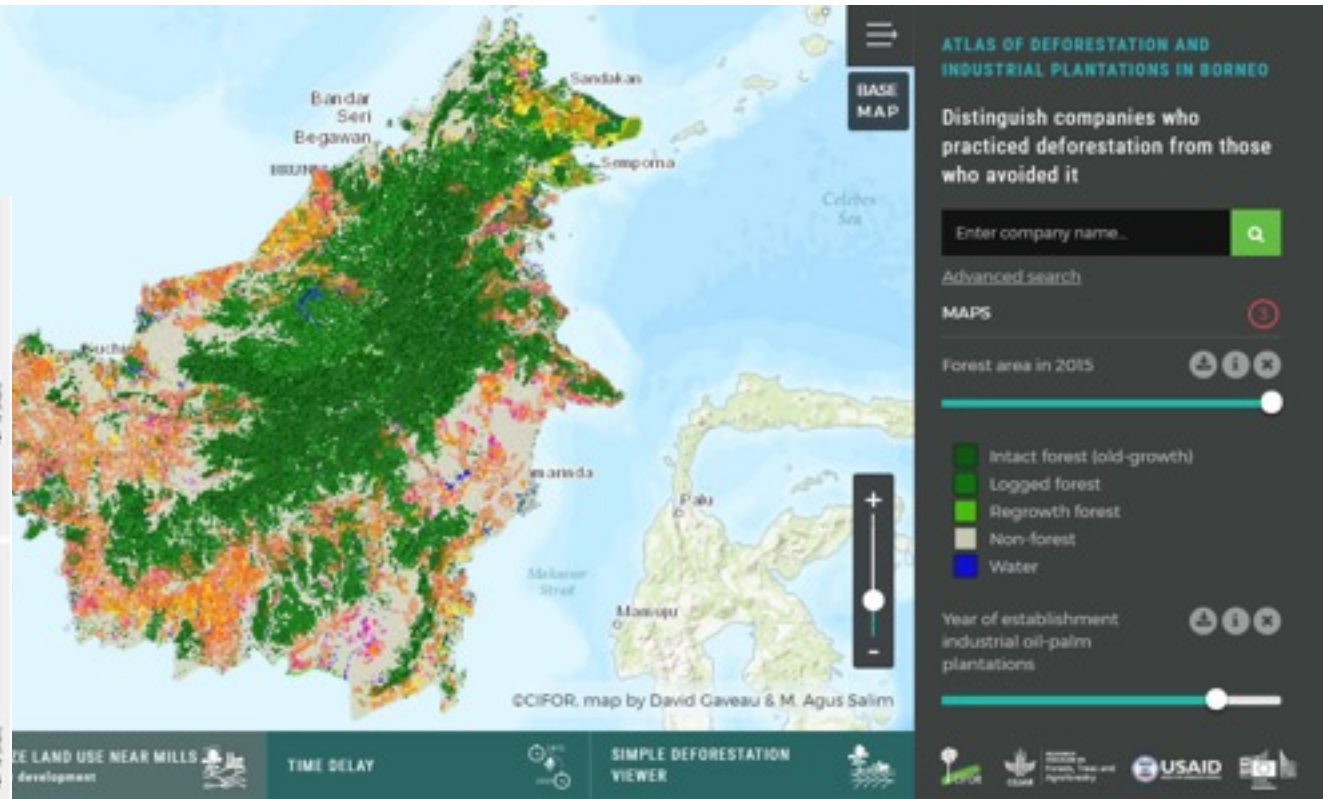


Source: Pacheco et al. 2017c



# What is happening on the ground?

## Atlas of deforestation and industrial plantations in Borneo



### Deforestation 2001 - 2016: all forests vs. peat-swamps

- Total deforestation
- Deforestation caused by plantation industry (Oil Palm & Pulpwood)
- % share of deforestation caused by plantation industry
- Fitted curve for total deforestation
- Fitted curve for industry-driven deforestation

<http://www.cifor.org/map/atlas/>







RESEARCH  
PROGRAM ON  
Forests, Trees and  
Agroforestry

This research was carried out by CIFOR as part of the CGIAR Research Program on Forests, Trees and Agroforestry (CRP-FTA). This collaborative program aims to enhance the management and use of forests, agroforestry and tree genetic resources across the landscape from forests to farms. CIFOR leads CRP-FTA in partnership with Bioversity International, CIRAD, the International Center for Tropical Agriculture and the World Agroforestry Centre.

[cifor.org/Forests-Trees-Agroforestry](https://cifor.org/Forests-Trees-Agroforestry)